

NO CONTACT

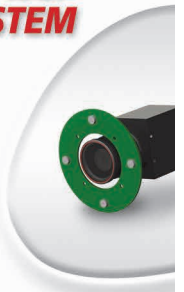
WHEEL ALIGNERS

The innovative Touchless (without contact) Measuring Robot.

**WIRELESS
COMMUNICATIONS**



**FASEP
CAMERA SYSTEM**



**WINDOWS 7
COMPATIBLE**

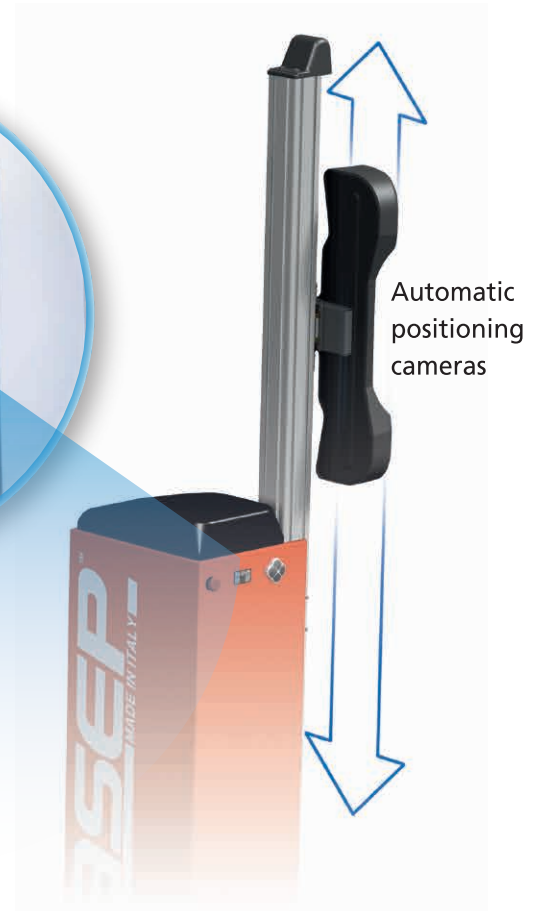


FASEP 
MADE IN ITALY
SOMEONE YOU CAN TRUST

NO CONTACT

KAMERASYSTEM

**Artificial Vision
for 3-dimensional
analysis
of the vehicle**



**Precise
measurements
stable and
repeatable.**



NO CONTACT

**Automatic
Positioning**

**Automatic
search,
measurement
and
adjustment.**

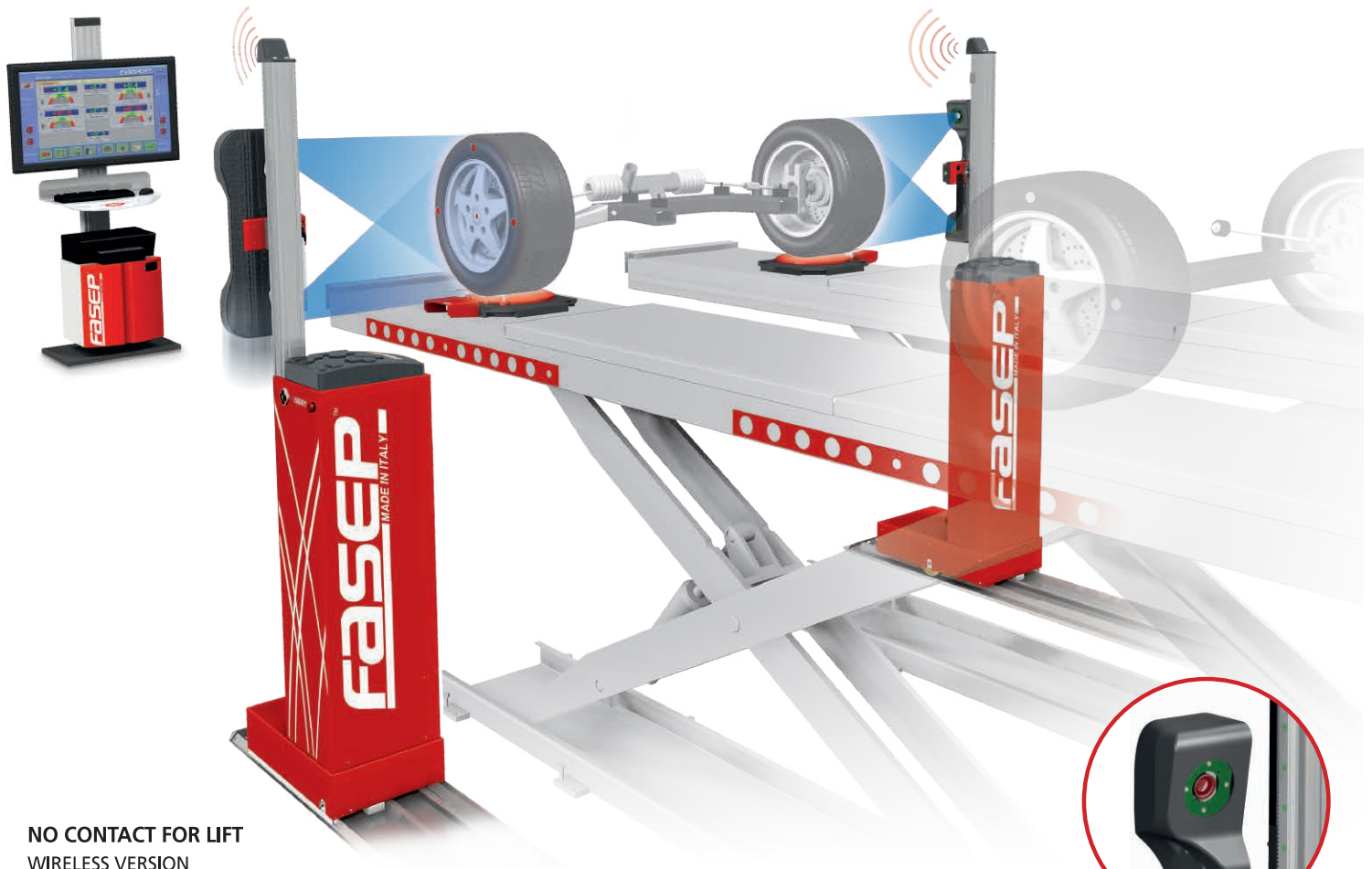
Innovative TOUCHLESS system



YouTube

NO CONTACT

Future is now!



NO CONTACT FOR LIFT
WIRELESS VERSION

The new FASEP NO.CONTACT technology introduces important new features:

- No target on the wheels needed
- No need to move vehicle back and forth compensate measurements
- Accuracy of measurements comparable to infrared technology (much better then traditional 3D accuracy)
- Automatic positioning of cameras
- Automatic tracking when lifter is operated



**CAMERA
SYSTEM**



**CONTROL
SYSTEM**

NO CONTACT

- Artificial Vision for 3-dimensional analysis of the vehicle
- Automatic research, measurement and adjustment
- Automatic pursuit of the movement of the wheel
- Higher accuracy compared to target based 3D system
- Avoid errors in positioning of the clamps or rim's imperfections
- Precise measurements, stable and repeatable
- No more service calls for broken clamps or fallen sensors
- It can be used with any lifting system already existing in your workshop
- Designed to improve your work and to give a new image to your company



NO CONTACT FOR PIT
WIRELESS VERSION

MAIN POSSIBLE MEASUREMENT

- Total toe
- Single toe
- Camber
- Caster
- Included angle
- Lock angle

50%
faster than
3D aligners

20%
faster than
Fasep contact
clamps system

**2 available
versions**

- 1. wi-fi based**
with automatic
battery recharge
- 2. by cable**
power and data
transmission by cable



WINLOGIC:

simple and intuitive.



The user easily controls all functions, through Winlogic software interface, with the use of the graphics and icons, and using the wheel aligner is absolutely intuitive.

NO CONTACT



**Minimum
intervention
by the operator**



NO CONTACT

FASEP
MADE IN ITALY



*Minimum
side space
required*

85 CM

85 CM

**Compatible
with any
lifting system**

*"it can
operate
at any
height"*



 YouTube

NO CONTACT

POSSIBLE MEASUREMENTS

- Total Toe
- Single Toe RH and LH
- Thrust angle (automatic compensation)
- Camber
- Caster
- Direct Regulation of Caster
- King Pin
- Simultaneous adjustment Toe
- Camber-Caster
- Toe - out - on - turns ⁽¹⁾
- Lock angle (Max)
- Run-out (automatic compensation)
- Included angle

MAIN FUNCTIONS

- Cars - Trucks data bank
- Customers data bank
- Zoom
- Self calibration - Self diagnostic
- Advanced diagnostics program
- Pre-inspection report
- Image Bank
- Vital Sensor Information

TECHNICAL FEATURES

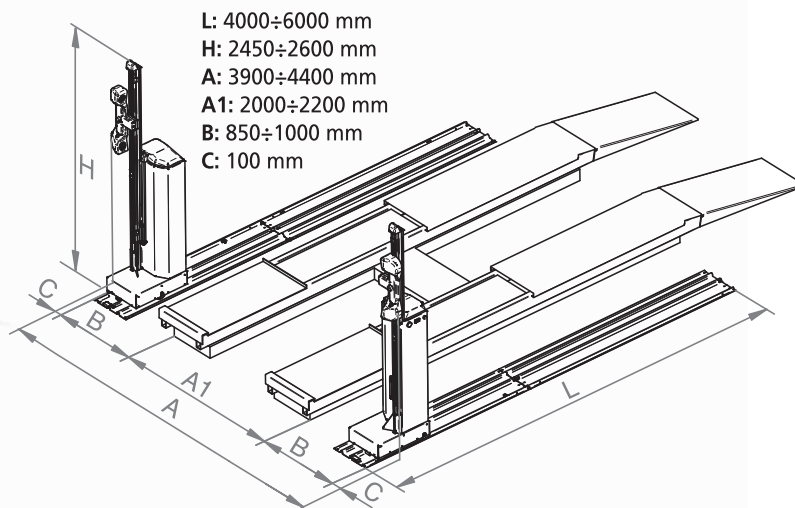
- Power supply 200-240V 50-60Hz
- Power Source max 500 W
- Wheel diameter 10-30"
- Measuring Accuracy 0,03° - 0,2 mm
- MEASURING RANGE
 - Total toe $\pm 20^\circ$
 - Single toe $\pm 20^\circ$
 - Camber $\pm 20^\circ$
 - Caster $\pm 30^\circ$
 - Included angle $\pm 40^\circ$
 - Lock angle ⁽¹⁾ $\pm 80^\circ$
- Personal computer Intel Core i3
- Video 19,5" LCD
- External interface USB+GIGA ETHERNET
- Max weight on turntable
 - Standard 750 kg
 - Heavy Duty 1000 kg
 - Electronics 3500 kg
- Available languages 23

MAXI FUNCTIONS (FULL OPTION)

- Image bank
- Customer databank
- Pre-inspection report
- Print-out format selection
- Resume function
- Ride-height related specifications
- Measure Suspension (Jack & Hold)
- Toe-curve (generic)
- Toe-curve (VAG)
- Engine-cradle adjustment
- Lifter compensation
- Steering at 10 deg
- Steering Wheel centering ⁽¹⁾



(1) It requires Electronic Turntables



Authorized dealer



For further information
about this and other
products, please visit
www.fasep.it

FASEP
MADE IN ITALY

FASEP 2000 s.r.l.
Via Faentina, 96 - 50032 Ronta (Firenze) ITALY
Tel. +39 055 8403126 - Fax +39 055 8403354